

KAKE

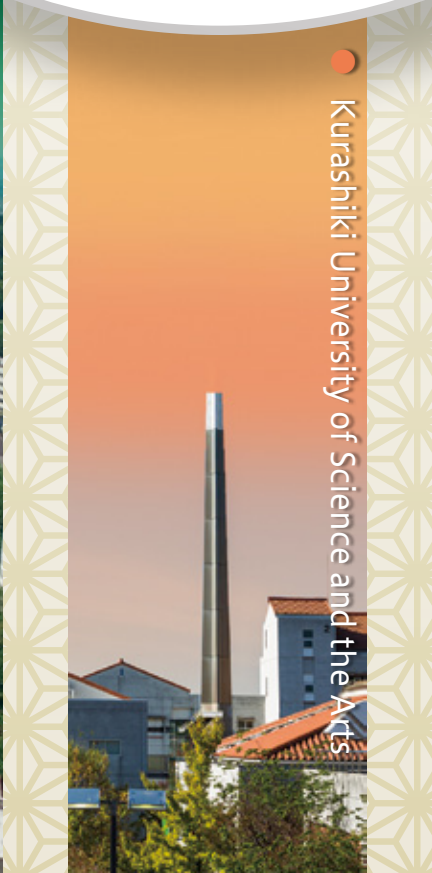
EDUCATIONAL
INSTITUTION



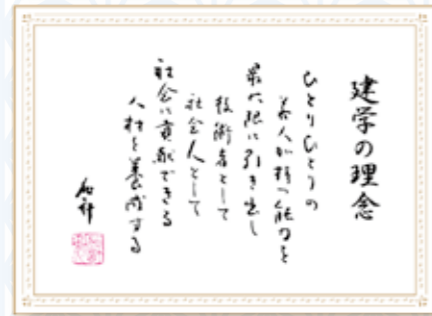
● Okayama University of Science

● Kurashiki University of Science and the Arts

● Chiba Institute of Science



FOUNDING PHILOSOPHY



道

To draw out each and every youth's abilities to their maximum potential, and to educate individuals to contribute to society as skilled professionals and as members of their communities.

LOCATIONS

- Okayama University of Science
- Kurashiki University of Science and the Arts
- Chiba Institute of Science
- Tamano Institute of Health and Human Services
- Okayama University of Science Specialized Training College
- Okayama University of Science High School
- Okayama University of Science Junior High School
- Mikage International Kindergarten



CONTACT US:

Pre-Admission Advising
for International students (All three universities and affiliated schools)
Speech Contest Advising
Overseas Programs Advising

▶ Department for International Affairs in Japan

Phone: +81-86-256-8418
Email: koryuminna@edu.kake.ac.jp

Pre-Admission Advising
for International students
Speech Contest Advising

▶ Overseas Liaison Office and schools

Sri Lanka:
Phone: +94-37-22-3-8600
Email: sputnik_sl@yahoo.com

Vietnam (Ho Chi Minh):
Phone: +61-406-936-436
Email: tandanho@edu.kake.ac.jp

Nepal:
Phone: +81-86-231-8181
Email: japansomeday@yahoo.co.jp

South Korea:
Phone: +82-41-571-7378
Email: ckt153@hanmail.net

China (Beijing):
Phone: +86-10-8478-0827
Email: pch@pchschoool.com

China (Shanghai):
Phone: +86-21-5111-3698
Email: jjaji202@163.com

Pakistan:
Phone: +92-3335-10-25-74
Email: ayakouk@gmail.com

Australia:
Phone: + 61-4-4754-5448
Email: itayuko@hotmail.com

THE CITIES OF OKAYAMA & KURASHIKI

EXPERIENCE JAPANESE HISTORY AND CULTURE

Okayama



Momotaro

Momotaro is a famous story character who was born in Okayama where you will come across various places that have some connection or depiction of Momotaro. Among these is the famous Kibitsu Shrine where you will see a statue of the character that captures the attention of all who visit. You can get there by taking the Momotaro Line train from Okayama Station to Kibitsu Station. Next to Kibitsu Shrine is Kibitsu Hiko Shrine where there is a bronze

statue of Momotaro. In front of Okayama Station is another statue Momotaro along with the animals that accompanied him on his journey and Momotaro-Odori (Street) directly in front of the station.



Korakuen & Okayama Castle

Bicycling

A common feature of Okayama is the number of people riding their bicycles. Many junior, senior high school and university students commute by bicycles to and from school, and other people and places in



between. You will also see people commuting to and from work every day and others who do their daily shopping. If you

are interested in taking a leisurely ride around the city, there is a bicycle rental service called 'Peach Bicycle' that allows people to ride freely anywhere and anytime. A ride to nearby Korakuen Garden or Okayama Castle, two places from the days of old, makes for a pleasant trip.



'Peach Bicycle' (MOMOCHARI)

Kurashiki



Kurashiki Bikan-Chiku

When people say "Kurashiki," Bikan-Chiku is the first place that comes to mind with its characteristic Japanese white walled buildings and willow trees along the Kurashiki River. Built in the 1600s, Bikan-Chiku was integral to the city's growth as a port bringing various goods and commodities. Kurashiki is also considered the cultural center of Okayama Prefecture with its various museums, one of which is the Kake Museum of Art and libraries. A day in Bikan-Chiku is not only a place of

sightseeing, but also a place that exposes the palate to many delicious delights that are unique to Japan. It should be known that because of Momotaro, Okayama is renowned for its peaches. In addition to peaches, Okayama is also famous for grapes and peaches. Various shops in Bikan-Chiku serve an array of seasonal pastries made with all these fruits.



Koraku-en Garden

Get a sense of Japanese historical landscape at Koraku-en Garden. Built in 1700 and reaching its present form in 1863, Koraku-en is considered one of the Three Great Gardens of Japan. It is a popular spot for tourists and even the Imperial family.



Okayama Station

Travel practically anywhere in Japan from Okayama Station. There are eight local train lines that will take you to different parts of Okayama Prefecture and points beyond, and all Sanyo Shinkansen Trains (Bullet Trains) stop at Okayama Station and will take you to any major city in no time. Okayama Station is also shopping central of Okayama city and is home to and surrounded by many shops and restaurants.



Brazilian Park Washuzan Highland

Enjoy a day at Washuzan Highland Amusement Park. Rides, food, inline skating along with the Brazilian sounds of samba music along with a lively musical performance by native Brazilians.



Okayama Castle

Another historical place located next to Koraku-en Garden. Okayama Castle was built in 1597, destroyed during World War II and reconstructed in concrete in 1966. Okayama Castle has six floors with each filled with displays of the castle's history.



Mitsui Outlet Park

A modern shopping center with many popular shops such as Nike, Under Armour, Michael Kors and Fossil located next to Ario, a mall, both within less than 5-minutes walking distance from Kurashiki Station.



Great Seto Bridge

The largest road+railroad bridge in the world that connects Honshu (the main island of Japan) to the island of Shikoku in the south. It took ten years to build the 13.1 km (8.1 mile) bridge. It takes approximately 20 minutes to cross the bridge.

OKAYAMA UNIVERSITY OF SCIENCE



Okayama campus

Faculty of Science

- Department of Applied Mathematics
- Department of Chemistry
- Department of Applied Physics (Physical Science)
- Department of Applied Physics (Medical Science)
- Department of Applied Science
- Department of Biochemistry
- Department of Life Science
- Department of Zoology

Faculty of Engineering

- Department of Applied Chemistry and Biotechnology
- Department of Mechanical Systems Engineering
- Department of Electrical and Electronic Engineering
- Department of Information and Computer Engineering
- Department of Intelligent Mechanical Engineering
- Department of Biomedical Engineering
- Department of Architecture
- Engineering Project Course

Faculty of Informatics

- Department of Information Science

Faculty of Biosphere-Geosphere Science

- Department of Biosphere-Geosphere Science

Faculty of Education

- Department of Primary Education
- Department of Secondary Education (Japanese Education Course)
- Department of Secondary Education (English Education Course)
- Department of Secondary Education (International Japanese Educator Course)

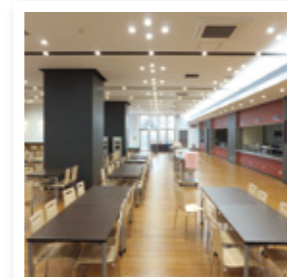
Faculty of Management

- Department of Management

Imabari campus

Faculty of Veterinary Medicine

- Department of Veterinary Medicine (6 year)
- Department of Veterinary Associated Science (4 year)



A MESSAGE FROM YOUR SENPAI ^{先輩!}



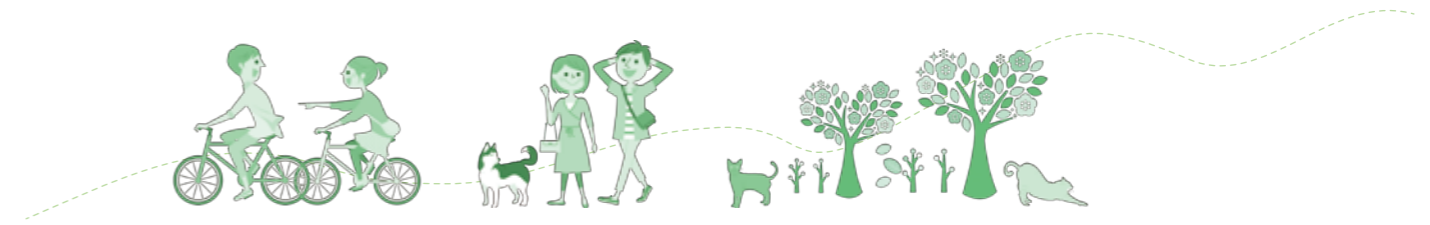
STUDENT VOICE

Trinh Ha Duc
Faculty of Informatics • Class of 2018

Everything I thought about Japan before coming were all just images. But when I arrived, I had many feelings. My first thought was how beautiful Japan was. Things like services and transportation were so fast and convenient. But Japanese cost of living was so expensive which made life rather difficult. But after becoming accustomed to living here, I could find ways around that, and make life easier.

I entered Okayama University of Science's Intensive Japanese Language Program where I not only learned Japanese, I could also learn Japanese culture and history and make friends with people from many countries. I am now in my second year of undergraduate studies. Thanks to my Japanese classes, I can now make friends with both Japanese and other foreign students. We spend time studying, talking, and exchanging ideas. I really enjoy my life at OUS.

In the future, I would like to continue living and working in Japan to build experience. When I return to Vietnam, I would like to work at a company that does business in Japan and Vietnam.



KURASHIKI UNIVERSITY OF SCIENCE AND THE ARTS



College of the Arts

Department of Design and Arts
Department of Media and Visual Arts

College of Life Sciences


Department of Life Science
Department of Medical Life Science
Department of Comparative Animal Science
Department of Health and Sports Science

College of Risk and Crisis Management

Department of Risk and Crisis Management

A MESSAGE FROM YOUR SENPAI 先輩!

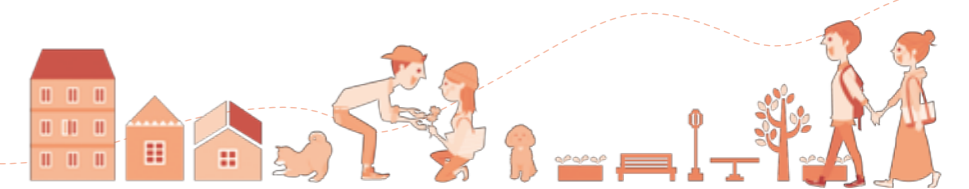


 **Hui Wen**
College of the Arts · Department of Design & Arts · Class of 2018

I have studied animation in China and abroad to learn as much as possible. The Intensive Japanese Language Program classes were easy to understand. I could increase my Japanese language fluency and now the regular undergraduate classes are easy to follow.

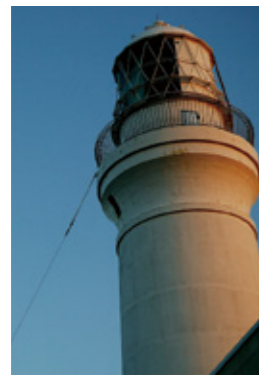
One of my pleasures of university life is the on-campus cafeteria. They serve “oyako-don” that tastes like what I eat in my hometown.

I now major in Illustration. The computer lab here has the latest software that I can use to draw illustrations every day. I enjoy it! In the future, I would like to be an illustrator.



THE CITY OF CHOSHI

Choshi



Places & Climate (the sea)

Choshi, located in Chiba Prefecture, is surrounded by the sea on three sides and is located in a livable and comfortable climate where, unlike Tokyo and other places, is cool in the summer and warm in the winter.

Because it is by the ocean, there are many sightseeing spots and food locally caught from the sea. Choshi Fishing Port yields much fish that makes for a large variety of delicious seafood such as tempura, sashimi, and seafood-topped rice bowl. Also, there are many places in Japan where one can

see a beautiful sunrise, but Inubo Lighthouse has made Choshi known as "The place with Japan's earliest sunrise." From the lighthouse, you get a spectacular view of the Pacific Ocean along with the sunrise.



Inubosaki Lighthouse

Tourist Spots

Among the many places overlooking the sea, Tenboku (Observation Hall) is the most popular tourist spot in Choshi. Unlike Inubo Lighthouse, the scenery from Tenboku features a 360-degree view combining the ocean with the greenery of Choshi with earthly circular effect. In addition to this, there is also the Choshi Port Tower which is near Choshi Fishing Port. Although it is open from the middle of to the end of September and from the beginning of November until the middle of January, from here, one can see the night view of Choshi and an evening view of the town together with the Tone River.



Choshi Fishing Port

Most of the fish consumed in homes and restaurants of Choshi like the ones in the two pictures (right and below) are caught and sold at Choshi Fishing Port.



Rice Bowl

A Rice Bowl using fish with a raw egg (fish used change daily)



Datemaki sushi

Baked thick with thick egg and "dashi" alone was made into a half-moon shape on a round bar, then placed on a thick roll.



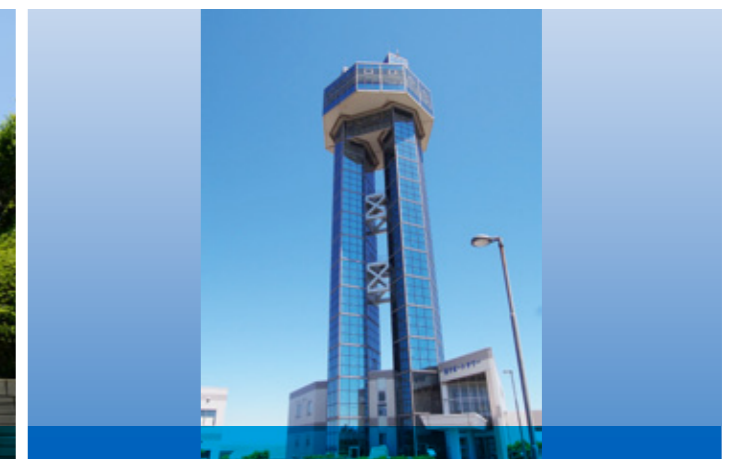
Inubo Lighthouse

Inubo Lighthouse has made Choshi known as "The place with Japan's earliest sunrise." From the lighthouse, you get a spectacular view of the Pacific Ocean along with the sunrise.



Tenboku (Observation Hall)

The most popular tourist spot in Choshi. From the top of Tenboku one can see a 360-degree view combining the blue of the ocean with the greenery of Choshi with earthly circular effect.



Choshi Port Tower

Although open in September and from November to January, you can see a beautiful night view of Choshi.



CHIBA INSTITUTE OF SCIENCE



Faculty of Pharmacy
Department of Pharmacy


Faculty of Risk and Crisis Management
Department of Risk and Crisis Management
Department of Health and Medical Sciences
Department of Risk and Crisis Management for Aviation Technology
Department of Animal Risk Management

Faculty of Nursing
Department of Nursing



A MESSAGE FROM YOUR SENPAI ^{先輩!}

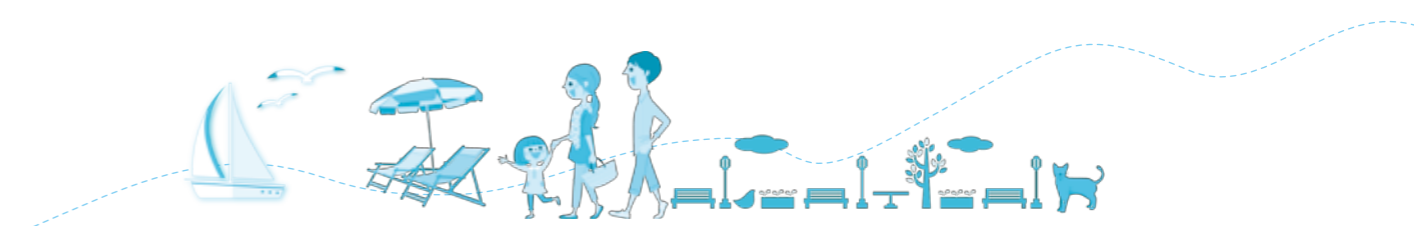
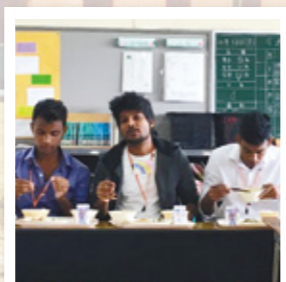


 **Choi Yura**
Faculty of Pharmacy · 12th Class to enrolled

I have been interested in Japan since junior high school and studied Japanese by myself. Because I liked chemistry, I went to and graduated from a college in Korea; but, it was hard to get a job. In the meantime, I saw a blog about Japanese pharmacy on the Internet. I received some guidance about studying in Japan and later entered Chiba Institute of Science through a private institute.

I was very worried about whether I could study well as a foreigner when I first enrolled. I am now relieved because the professors are capable of teaching to a large variety of students. I was also able to make many friends at CIS so I am enjoying campus life. In addition, the on-campus study rooms and the library help create a great study environment.

I think writing research reports is hard, but I find it interesting because the contents relate to everyday life. After I graduate, I would like to work in a hospital. I am encouraged to find out that past CIS graduates worked not only in hospitals, but also in pharmacies and pharmaceutical companies.





INTENSIVE JAPANESE LANGUAGE PROGRAMS

Kake has Intensive Japanese Language Program (IJLP) at all three universities; Okayama University of Science, Kurashiki University of Science and the Arts and Chiba Institute of Science. IJLP is a special course primarily for individuals of foreign countries who wish to enroll in the universities' undergraduate or graduate program, but lack sufficient Japanese language proficiency to fully comprehend university lectures and study independently of class. The IJLP is designed to assist prospective students in attaining language proficiency while gaining a better understanding of Japanese culture in preparation for entrance into one of the universities and vocational schools that Kake governs. All IJLP students are strongly supported by staff and faculty who are committed to assisting their advancement through to successful completion in higher education.



A SURVEY ABOUT STUDYING IN JAPAN

Question 1.
What is your favorite Japanese food?
 Yakitori, Yakiniku, Fried chicken (Fried chicken from convenience store is good.)
 Sushi, Ramen, Udon, Takoyaki, Bread.

Question 2.
What do you do when you are out with other foreigners?
 Drink liquor at a Izakaya, Cycling, Mobile game, Motorcycle, Tennis, Shorinji Kempo.

Question 3.
What are your favorite things to do?
 Take a picture outside, Go for a drive, Draw a picture, Study Japanese with a friend.

Question 4.
What is your favorite place in Okayama?
 Korakuen, Okayama Castle, Asahi River, Okayama Station, Okayama University of Science.

Question 5.
What is your favorite place in Kurashiki?
 Kurashiki Station, Ario, Kurashiki Bikan historical quarter, Art museum, School.

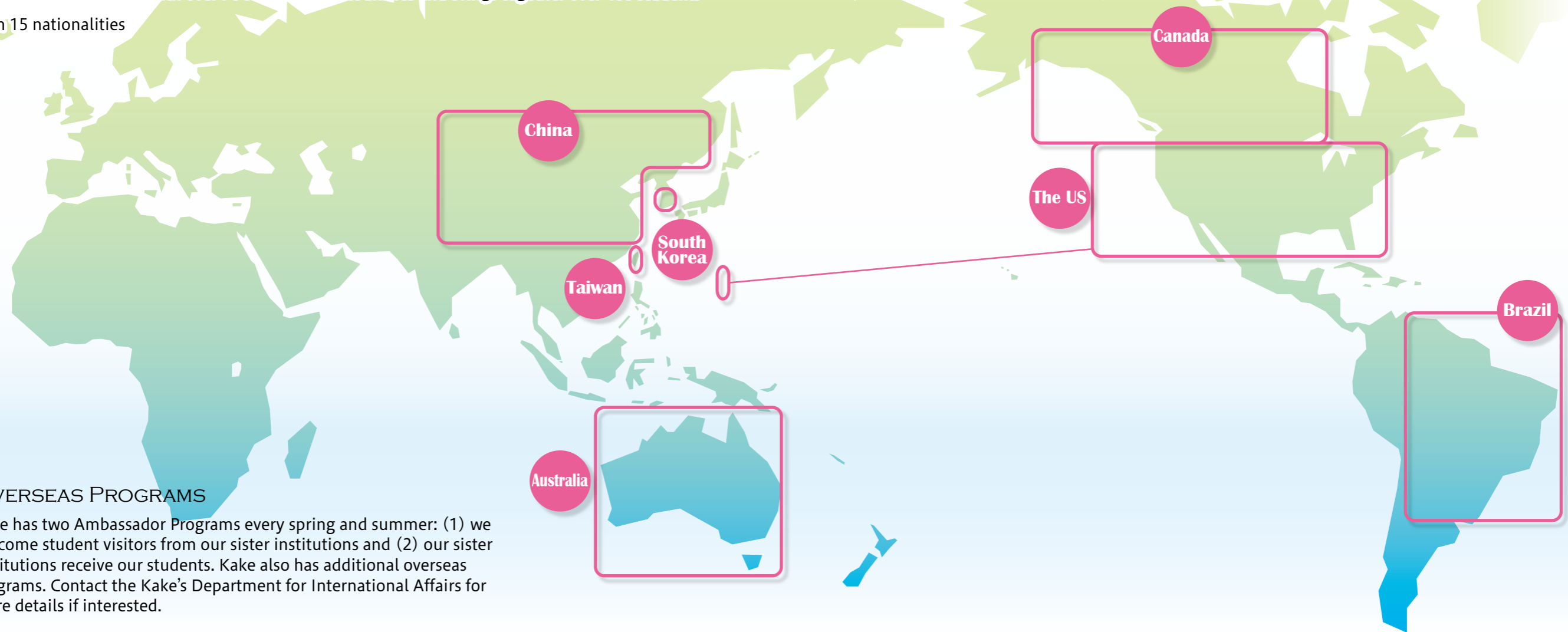
Question 6.
What is your favorite place in Choshi?
 Inubosaki, Sea, Choshi Marina, Aeon.

Question 7.
What did you think was most interesting about Japan when you came?
 There are a lot of vending machines, It's fine, Go to see a cherry tree, Kimono, A town is clean, The Japanese is civil and kind, 100yen Shop, A schoolchild goes to school on foot, Ikebana.

Question 8.
Where is the best place to buy groceries?
 Marunaka, Tenmaya (Okayama), BIG, Every, Halows, Marunaka (Kurashiki), Kasumi, Taiyo (Choshi).

AN INTERNATIONALLY LINKED INSTITUTION

Kake schools are linked with over 70 schools in 19 countries and brings together over 400 students from 15 nationalities



OVERSEAS PROGRAMS

Kake has two Ambassador Programs every spring and summer: (1) we welcome student visitors from our sister institutions and (2) our sister institutions receive our students. Kake also has additional overseas programs. Contact the Kake's Department for International Affairs for more details if interested.

● Ambassador Program 1



● Ambassador Program 2



THE KAKE INTERNATIONAL JAPANESE SPEECH CONTEST

Since celebrating our 50th anniversary in 2010, Kake Educational Institution has held the annual Kake International Japanese Speech Contest. It is our sincere hope that the contest contributes to making Japanese a global language, raises awareness of Japanese culture and inspires youth in various countries to acquire a more global perspective as future emissaries of friendship throughout the speech contest.



The First



The Second



The Third



The Fourth



The Fifth



The Sixth



The Seventh

Every year, we have preliminary contests scheduled in many different countries between the end of August to the beginning of October to decide a candidate for the Grand Final Contest which is held in November. If you are interested in the speech contest, contact our overseas director or partner school in your country on page 2 for more information.

STUDENT ACTIVITIES AND CLUBS AT KAKE THREE UNIVERSITIES

Okayama University of Science



KENDO CLUB



AIKIDO CLUB

Kurashiki University of Science and the Arts



SCHOOL FESTIVAL



SUMMER FESTIVAL

Chiba Institute of Science



LIFESAVING CLUB



LIFESAVING CLUB

Experience Japan!



● Okayama Korakuen Garden



● OKONOMIYAKI



● Lecture at a Kake university



● Making Udon

**Okayama University of Science**

1-1 Ridai-cho, Kita-ku, Okayama City, Okayama, JAPAN
URL: <https://www.ous.ac.jp/>

**Kurashiki University of Science and the Arts**

2640 Nishiura, Tsurajima-cho, Kurashiki-city, Okayama, JAPAN
URL: <https://www.kusa.ac.jp/>

**Chiba Institute of Science**

3 Shiomi-cho, Choshi-city, Ciba, JAPAN
URL: <http://www.cis.ac.jp/>

**Tamano Institute of Health and Human Services**

1-1-20 Chikkou, Tamano-city, Okayama, JAPAN
URL: <http://www.tamasen.ac.jp/>

**Okayama University of Science Specialized Training College**

8-3 Handa-cho, Kita-ku, Okayama-city, Okayama, JAPAN
URL: <https://www.risen.ac.jp/>

**Okayama University of Science High School**

1-1 Ridai-cho, Kita-ku, Okayama City, Okayama, JAPAN
URL: <http://www.ridaifu.net/>

**Okayama University of Science Junior High School**

1-1 Ridai-cho, Kita-ku, Okayama City, Okayama, JAPAN
URL: <http://www.kake.ac.jp/-info-j/>

**Mikage International Kindergarten**

2-15-27 Mikage, Higashinada-ku, Kobe-city, Hyogo, JAPAN
URL: <http://www.kakemik.jp/>